

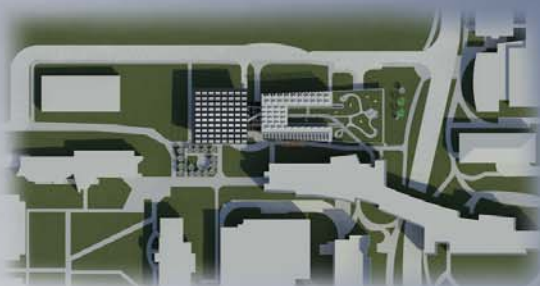
PROPOSED COLLEGE OF ENGINEERING SIGNATURE BUILDING “LEADING THE WAY TOWARD SUSTAINABLE ARCHITECTURE”



A LIVING LABORATORY BUILDING WHICH USES TANGIBLE FORMS OF SUSTAINABLE DESIGN TO EDUCATE AND INSPIRE STUDENTS.

A BUILDING WHICH ALLOWS OCCUPANTS TO BE IMMERSED IN A SUSTAINABLE ENVIRONMENT AND LEAVE WITH ENHANCED KNOWLEDGE THROUGH THEIR INTERACTION WITH THE SPACE.

A SIGNATURE BUILDING WHICH EMBODIES THE AMBITION AND COMMITMENT OF THE COLLEGE OF ENGINEERING TO SUSTAINABILITY IN DESIGN.



SITE PLAN



5th Floor

Room Legend

■ Admin & Planning	■ Gen. & Shared
■ AE Department	■ Learning Factory
■ AE Learning Spaces	■ Library
■ Dean's Office	■ Research
■ Dev. & C. Relations	■ UGrad Education



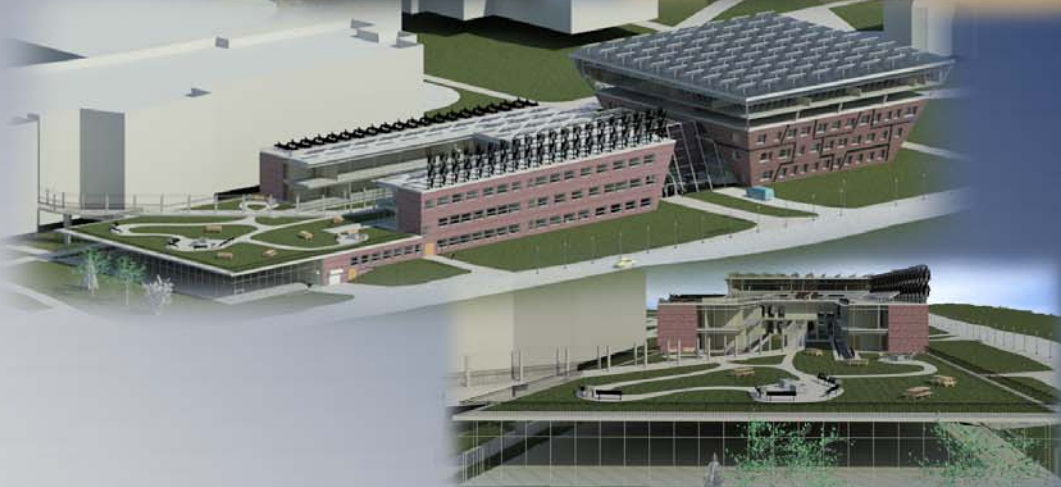
3rd Floor



2nd Floor



1st Floor & Basement



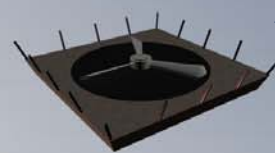
STRUCTURAL CONCEPTS

SLANTED COLUMNS WITH TIE-BEAMS
CENTRAL COLUMN FOUNDATION
STANDARD BAY SYSTEM IN WINGS
CONCRETE SLAB SYSTEM



BUILDING AS LIVING LABORATORY

VISIBLE STRUCTURE
VISIBLE HVAC ETC. SYSTEMS
ACCESSIBLE SUSTAINABILITY CONCEPTS
VISIBLE & ACCESSIBLE LABS & LF
ACCESSIBLE ROOF GARDEN



SUSTAINABILITY CONCEPTS

WHOLE FLOOR TURBINE
SOLAR PANELS
HELIX TURBINES
GREY WATER RECYCLING
LIVING ROOF
SOLAR SHADING

